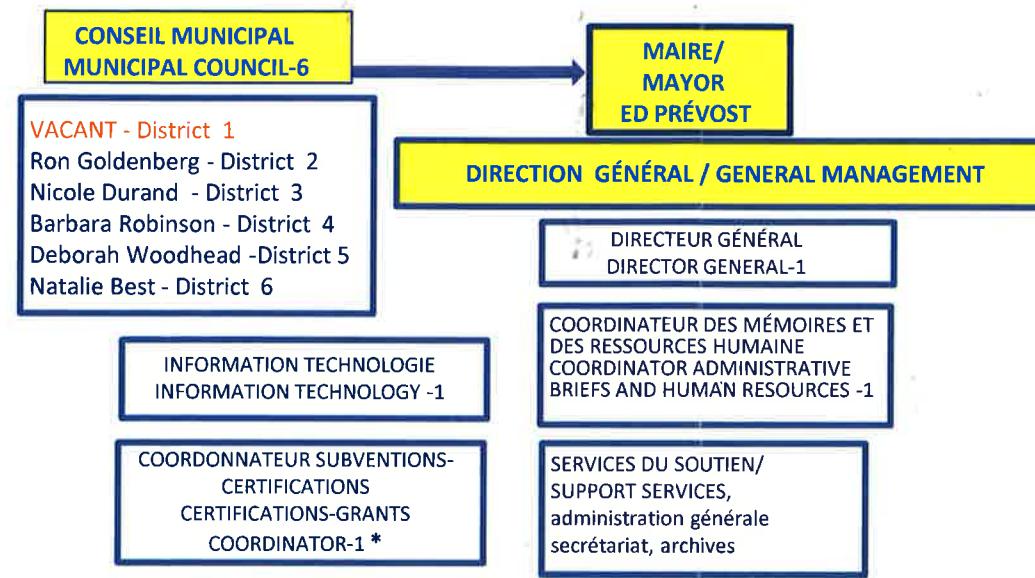
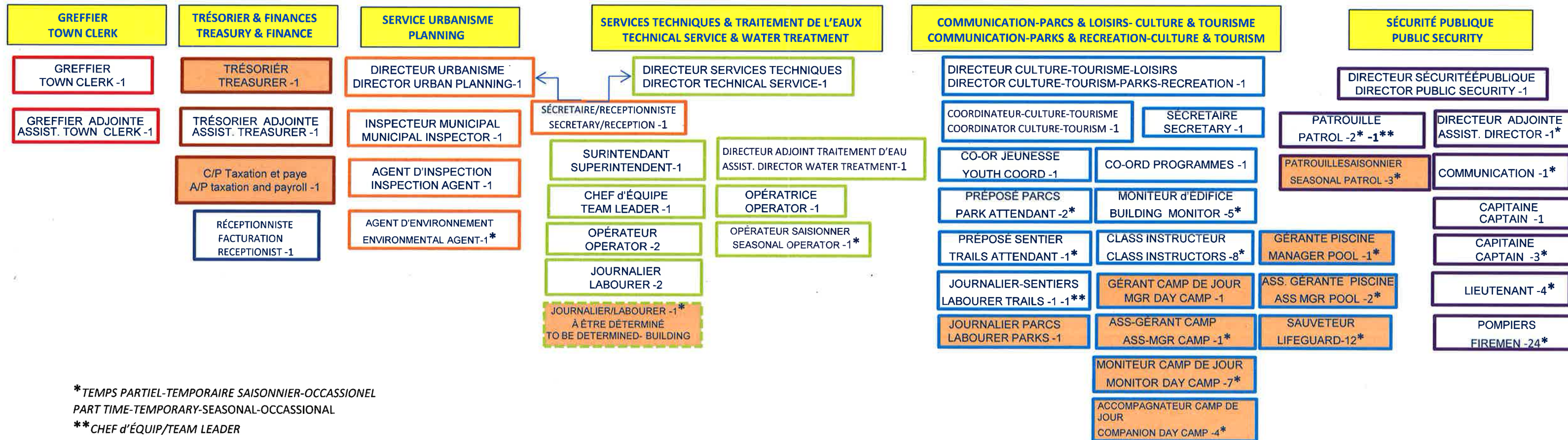




Winter 2017



TOTAL-121
 (COMPRENDS:TEMPS PARTIEL, PERMANENTE,
 SAISONNIER-OCCASSIONEL
 INCLUDES :PART-TIME-PERMANENT-TEMPORARY-
 OCCASSIONAL)
Directeurs-Cadres/Directors-Management - 15
Employées - 38 (INCLUDES TBD)
Pompiers/Fire Dept. - 33
Patrouille/Patrol - 6
Piscine/Pool - 15
Camp de Jour/Day Camp - 13



*TEMPS PARTIEL-TEMPORAIRE SAISONNIER-OCCASSIONEL
 PART TIME-TEMPORARY-SEASONAL-OCCASSIONAL
 **CHEF d'ÉQUIP/TEAM LEADER